

Unika Paints Splendor

NuTecSol

**WATER BASED ACRYLIC COATING
FOR INTERIOR SURFACE.**

Unika Paints Splendor is the perfect way to make a smart upgrade from distempers. It offers the finish of plastic paint, at a cost that is not too different from distemper. It gives 1.5 times the coverage of distemper, so you need less material. It also lasts for at least 3 - 4 years.

BENEFITS:

- Provides high quality smooth finish and colour coating for Interior walls
- Makes brighter, clean shades that will not lose properties for long time
- Excellent classy finish to make walls beautiful
- Better coverage and smoothness guaranteed at every time of application with superior finish.
- Long lasting film that keeps your house as good as new for a long time.
- Resistance to fungus attack
- Perfect value for money

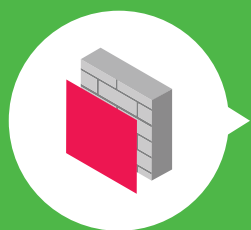
**GRADES
AVAILABLE:**

**PREMIUM
SUPREME
ULTRA**



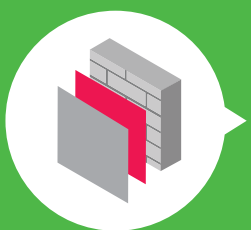
COVERAGE

On normal masonry surface after brushing



1 COAT

250 - 270 sq.ft/ltr**



2 COAT

130 - 150 sq.ft/ltr**

**Actual coverage may vary from the quoted coverage due to factors such as method and condition of application and surface roughness and porosity.

HOW TO APPLY



Clean the surface thoroughly with water & remove the flakes of old paints or lime wash







Apply 2 coats of Splendor on surface previously applied with wall primer. A gap of 4 to 6 hrs should be given between the coats. If necessary, third coat should be applied for good quality

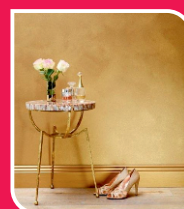


Dilute Splendor up to 20% with water and mix thoroughly

TECHNICAL DETAILS

Drying time	Surface dry time 30 min
Sheen levels	2 - 5 at 60 deg GH
Flash point IS101/1987 Part 1, Sec 6	NA
Stability of thinned paint	To be used within 24 hours

AVAILABLE PACKAGING SIZES:				
	1L	4L	10L	20L



Manufactured and marketed by
NuTecSol Products India Pvt, Ltd.,

Plot No. 63A, KIADB Industrial Area Phase 2,
Antharasanahalli, Tumkur-572106, Karnataka

An ISO: 9001 : 2015 Accredited Company

+91 83103 17294 | +91 86602 58402

info@nutecsol.in | www.nutecsol.com

